

Hello,

Multimedia2006 v19" is for use with 7X and 16X Indoor Signs only.  
Please un-install any previous version of Multimedia 2006 before installation.



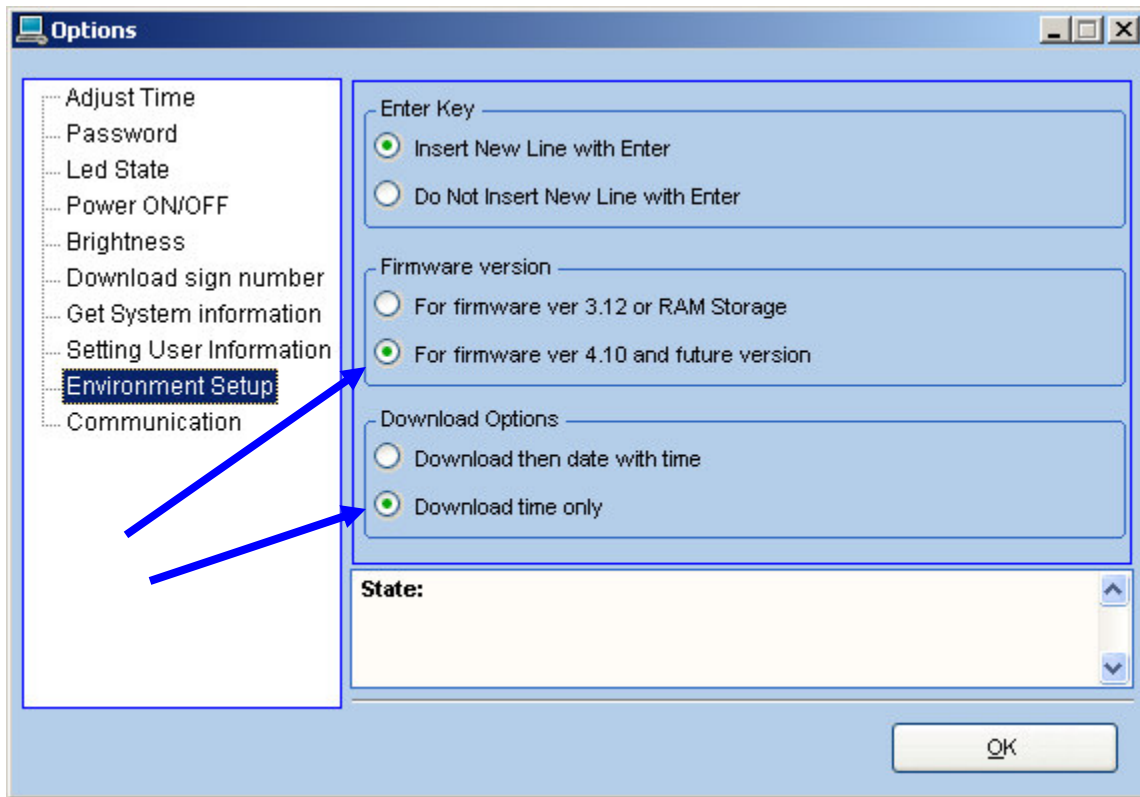
Please install this software.

This software works with the Firmware BRG4.7 and above in your One or Two line signs.

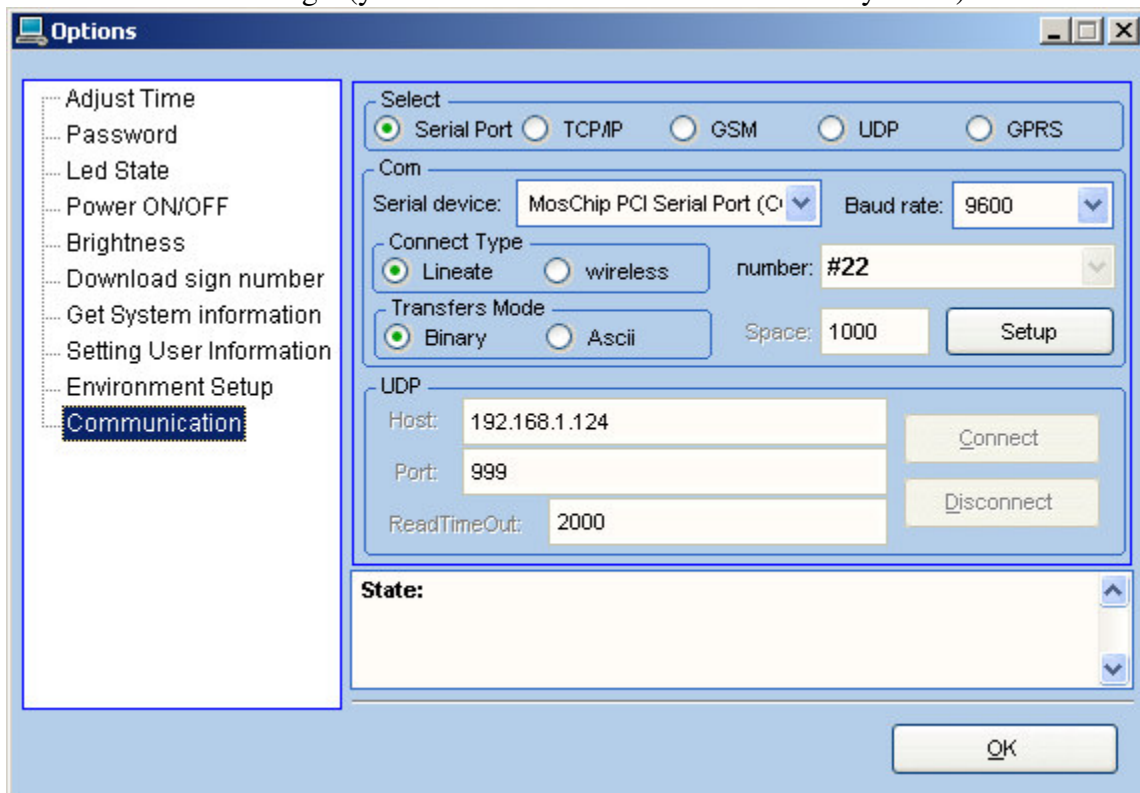
Multimedia2006 v15 is for the older processors.

Note the lower right information is used to turn on and off sign , Be sure to set the clock to correct time, by using 'options' 'adjust time'.

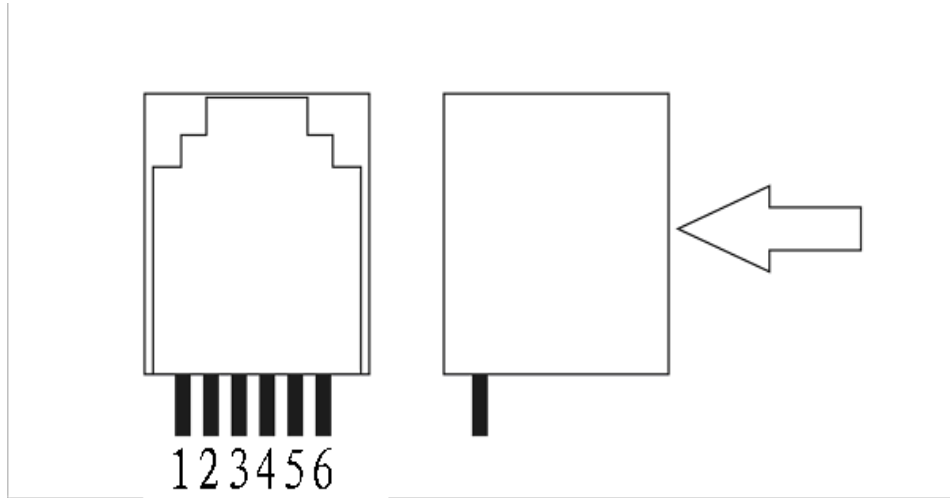
Also **VERY IMPORTANT** set the 'Environmental Setup' like this:



Communications settings: (your serial or Ethernet device name may differ)



**Note: the wiring on plug requires 6 conductors.**  
**Standard phone extensions may only be 4 conductors AND WILL NOT WORK.**  
Moving Message RJ11/RJ25



No.	Corresponding Communication Color	RJ11	Function
1	Blue	———□	232IN
2	Amber	———□	485A
3	Green	———□	485B
4	Red	———□	NO / Reserved
5	Black	———□	GND
6	White	———□	232OUT

BRG Tech Support  
1-800-0220 x200